



Infraestrutura no Setor Sucroenergético

Ethanol Summit 2017

José Carlos Hausknecht

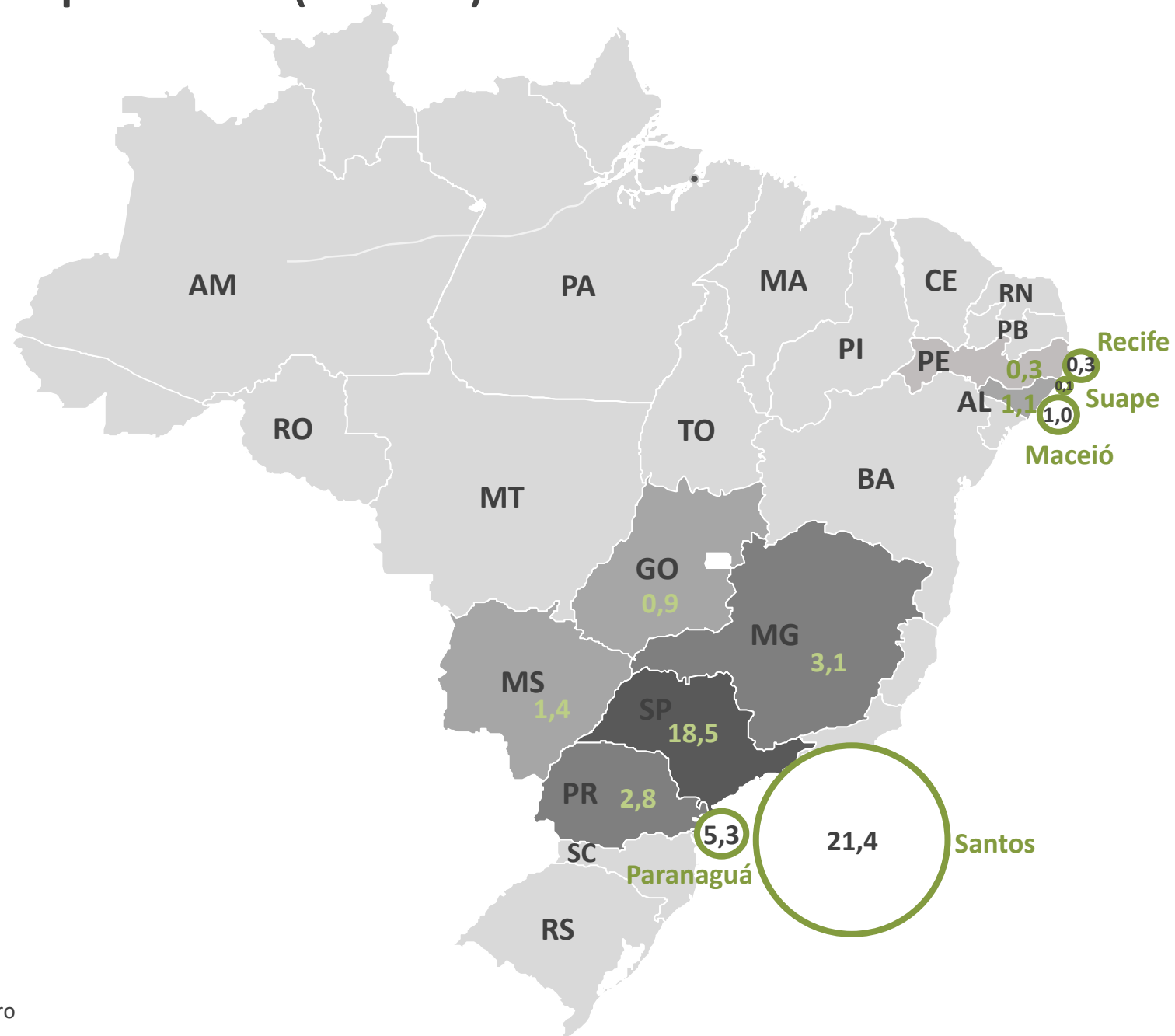
27 de junho de 2017

Production increase = Productivity + New Regions

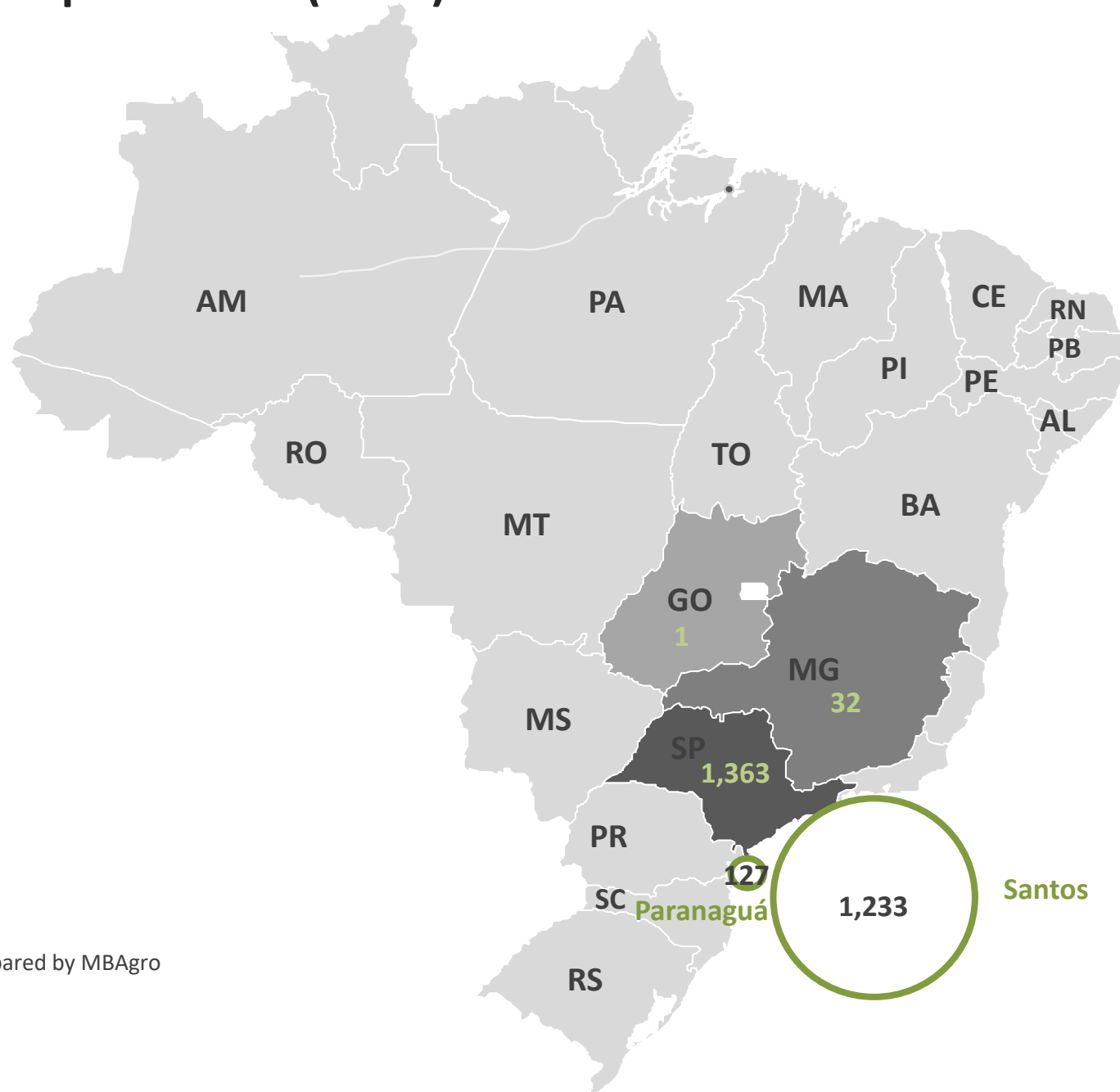
Ethanol Supply = Production x Imports

Logistics = Road x Rail x Pipeline X Water

Sugar Exports 2016 (mm ton)

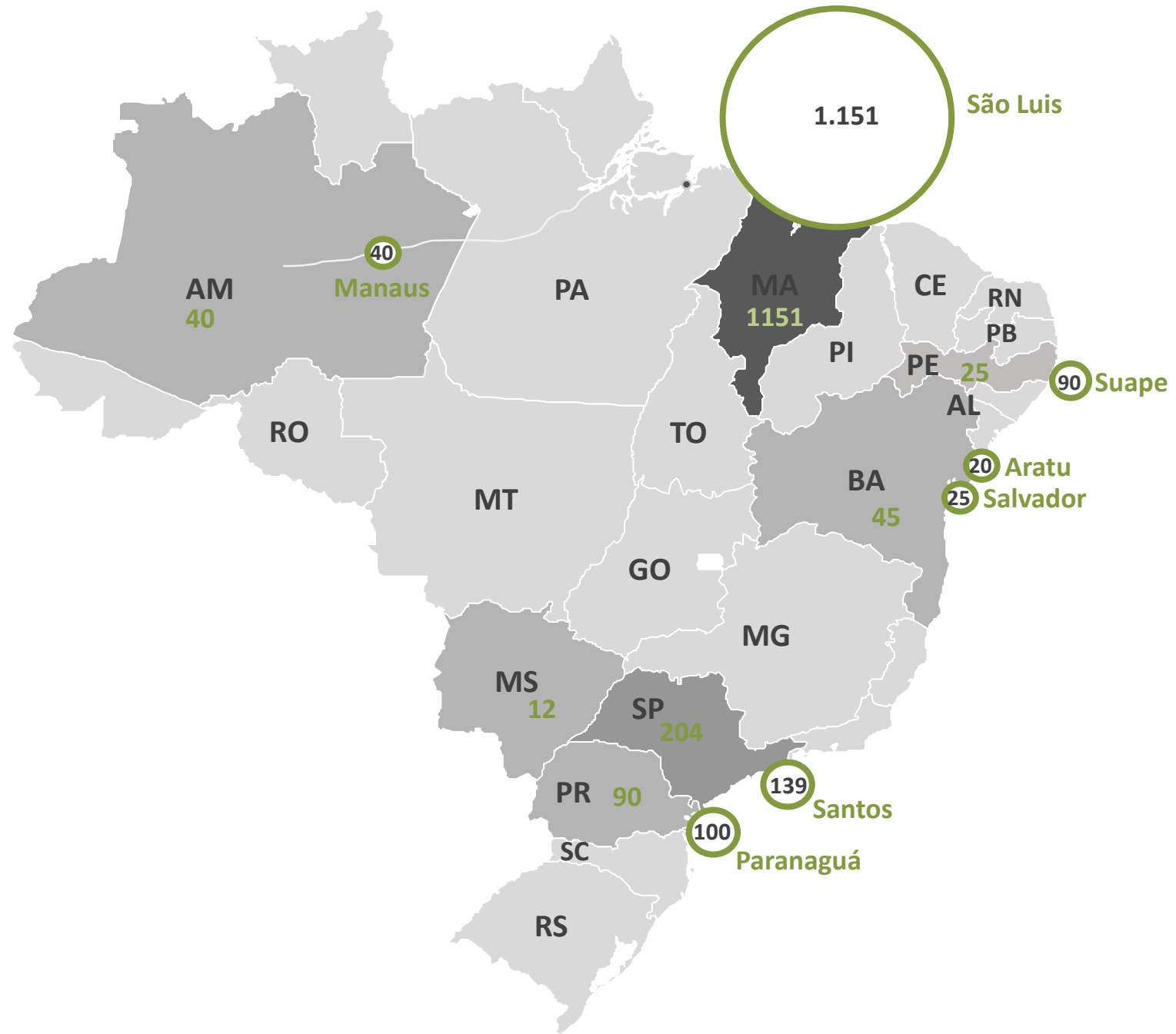


Ethanol exports 2016 (mm l)

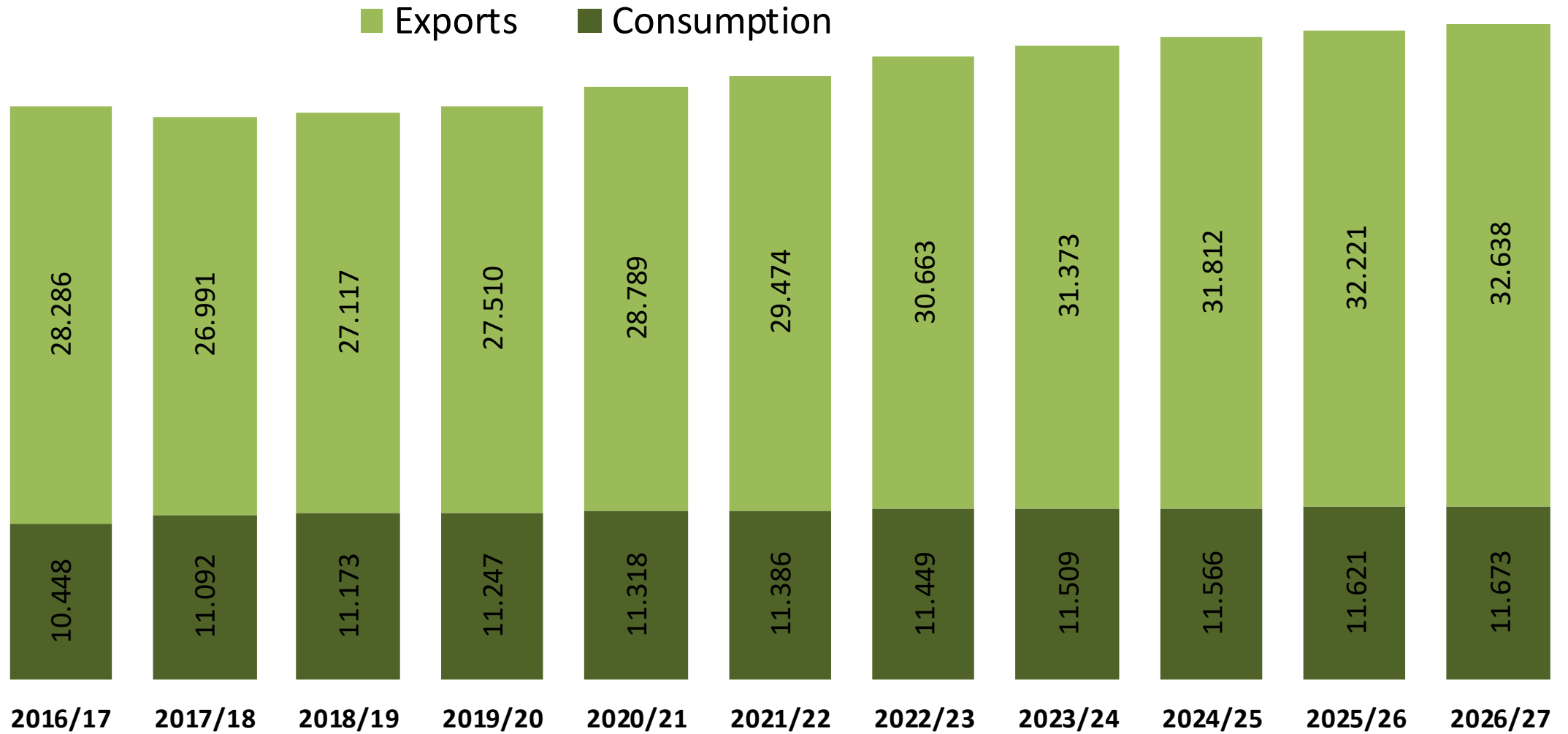


Source SECEX Prepared by MBAgro

Ethanol imports 2016 (mm l)



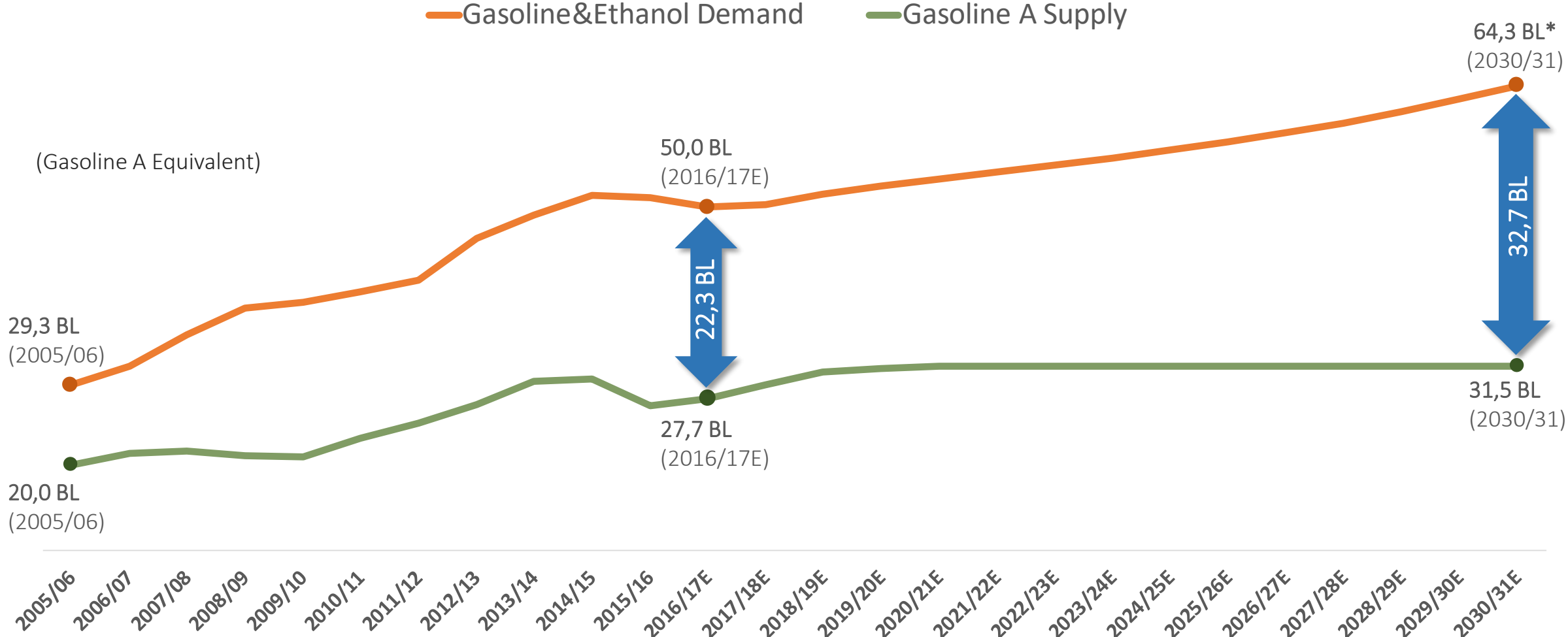
Sugar Consumption and Exports (mm ton)



Exports + 15% (4,4 mm ton)

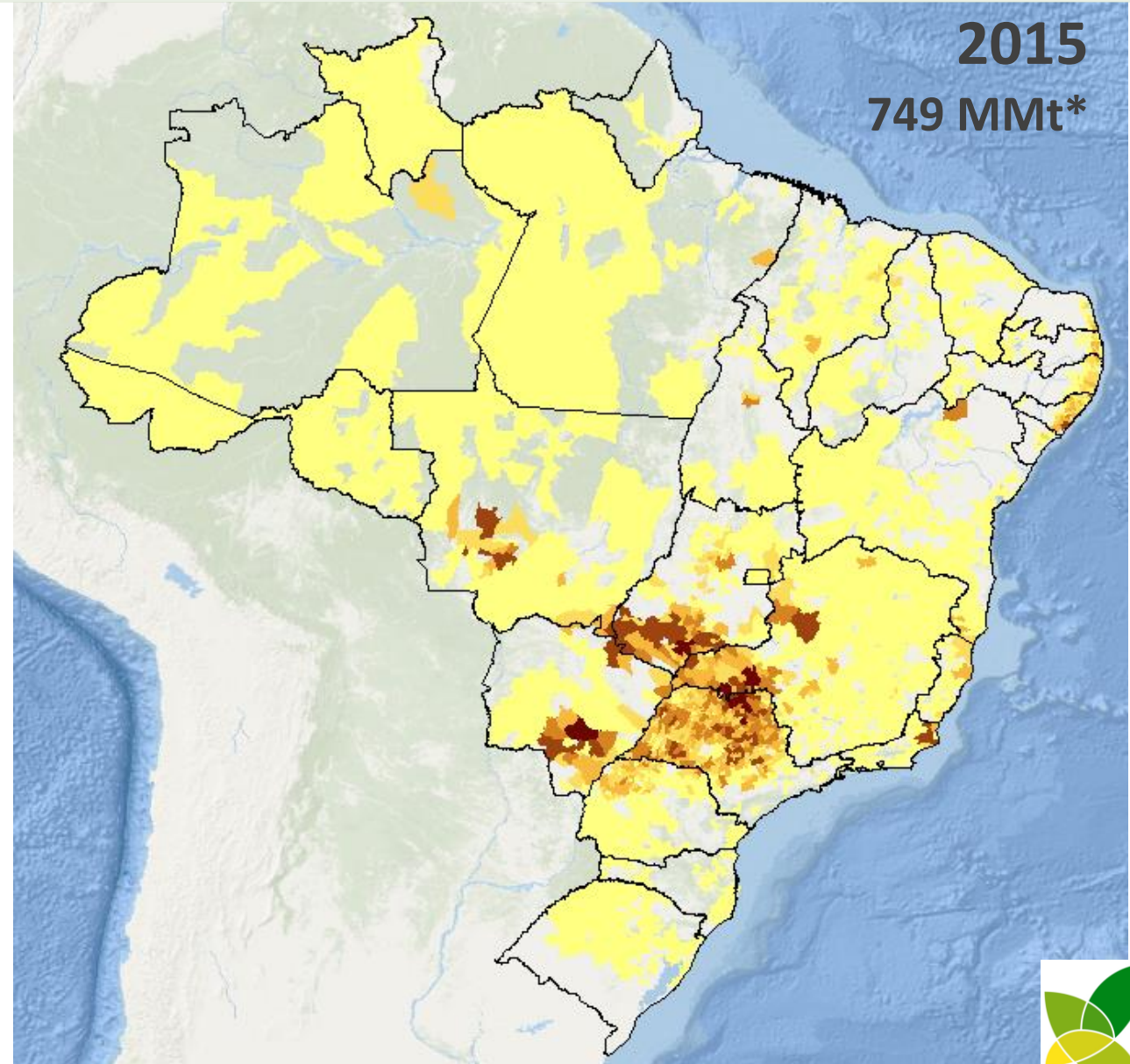
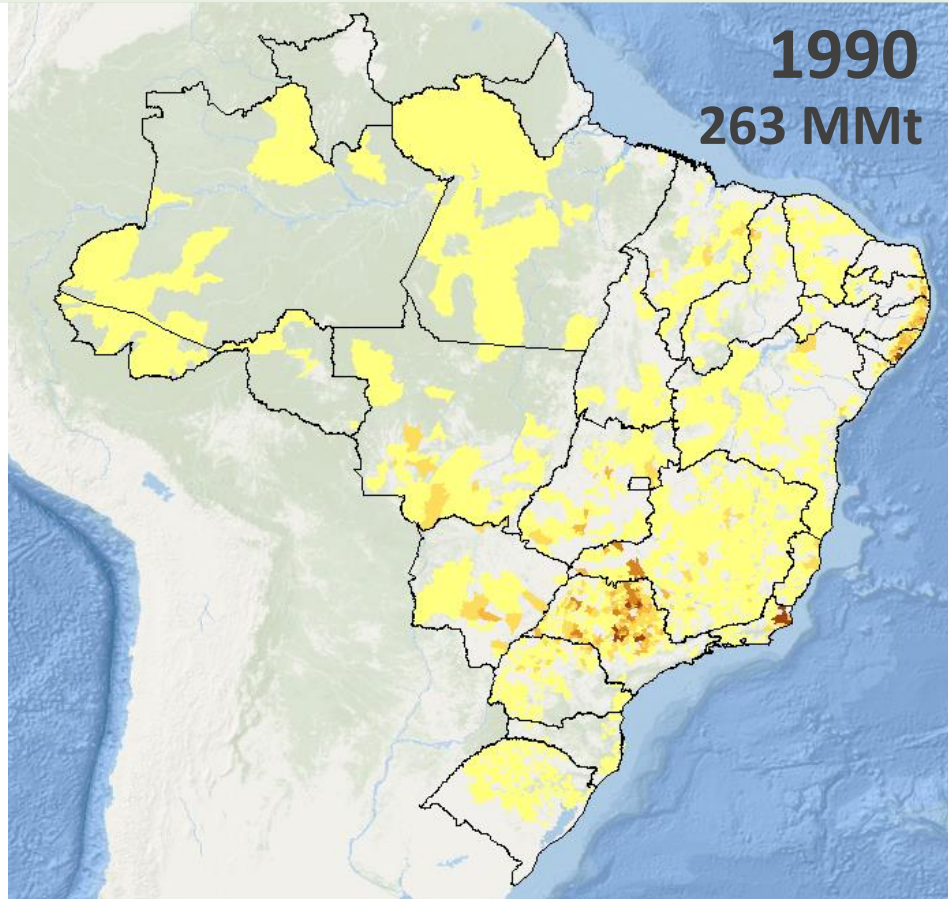
Consumption + 12% (1,2 mm ton)

Fuel Supply and Demand - Brazil

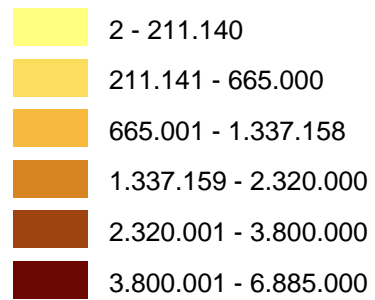


Source: Prepared by MB Agro * Moderate Growth Scenario

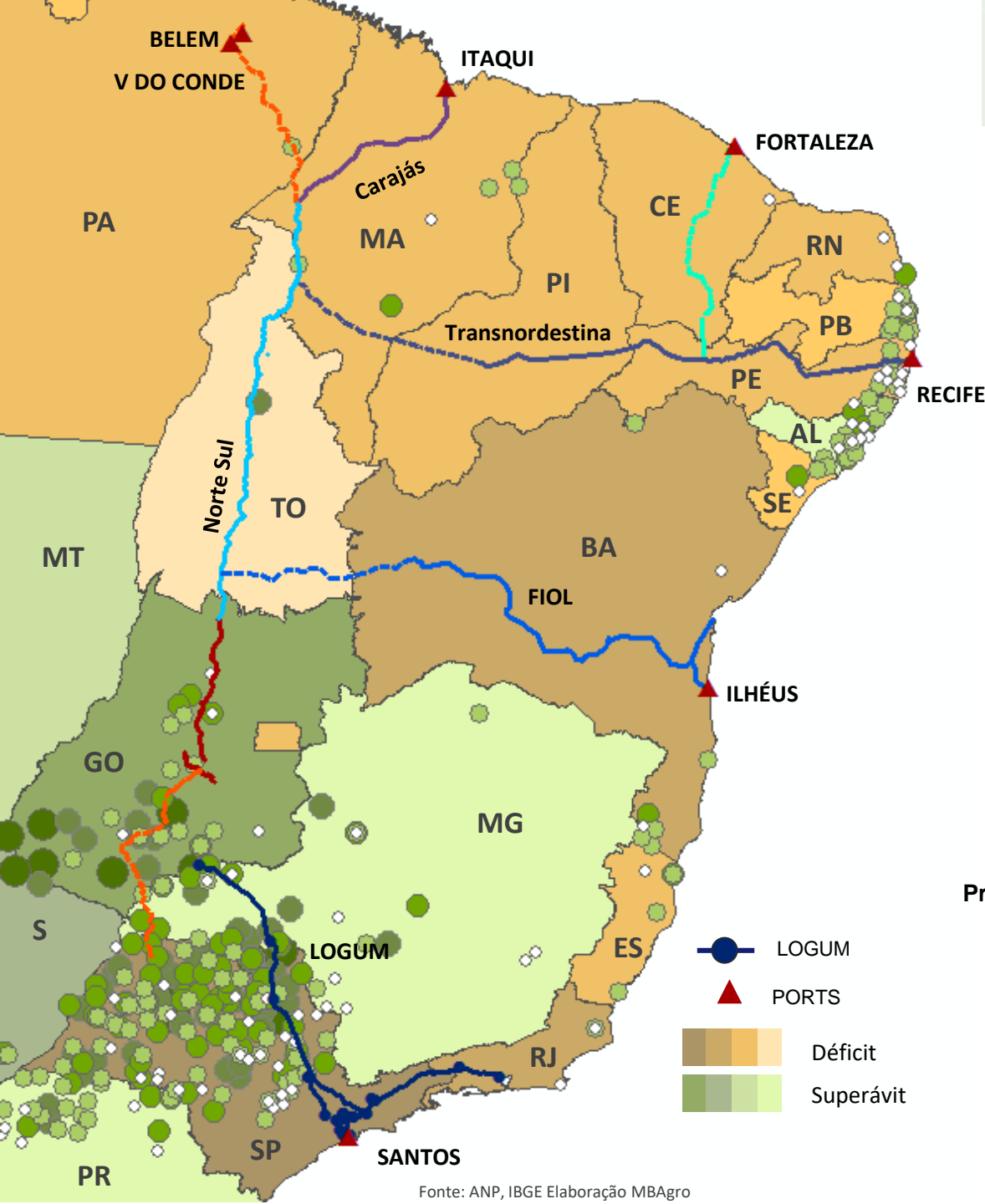
Sugarcane Production



**Production
(tons)**



Ethanol Logistics and Production Capacity



| Origem | Destino | Via | Distância Km |
|--------------|--------------|--------------------|--------------|
| Itumbiara/GO | Santos/SP | Logum | 850 |
| Anápolis/GO | Belém/PA | Norte -Sul | 2.027 |
| Anápolis/GO | Itaqui/MA | Norte -Sul/Carajás | 2.110 |
| Anápolis/GO | Ilhéus/BA | Norte -Sul/FIOL | 2.187 |
| Anápolis/GO | Recife/PE | Norte -Sul/Transn. | 3.142 |
| Anápolis/GO | Fortaleza/CE | Norte -Sul/Transn. | 3.216 |

Production Capacity (m³/day)

- 1 - 380
- 381 - 770
- 771 - 1.380
- 1.381 - 2.250
- 2.251 - 3.700

- LOGUM
- ▲ PORTS
- Déficit
- Superávit



**R. Henrique Monteiro, 90 – 12° andar
São Paulo – SP – 05423-020
Telefone: (011) 3372-1085
Fax: (011) 3372-1086**

contato@mbagro.com.br